

Villa Kamon

Region: Phuket **Sleeps:** 2

Overview

Discover the epitome of tropical tranquillity at our contemporary two-storey villa in Kalima. Nestled on a serene hillside with breathtaking views of the Andaman Sea, this Patong pool villa is an idyllic retreat for families and couples alike. The elegant design showcases a spacious open-plan living area that seamlessly blends indoor and outdoor living, leading to your private pool and sun deck. The upper floor bedroom offers a romantic haven, commanding the most stunning ocean vistas.

Indulge in the villa's exceptional amenities, including a rooftop space perfect for intimate dining and stargazing. Enjoy complimentary treats from the mini-bar, a welcome fruit basket, and refreshing drinking water. Thoughtful touches such as a coffee machine, in-room audio system, and satellite TV ensure your stay is as comfortable as possible. With Kalima toiletries, bathrobes, and slippers, every detail has been considered. Relax and unwind in this tropical paradise, where every moment feels like a dream.

Facilities

Watersports • Waterfront • Walking/Hiking Paths • Ground Floor Bed & Bath • Wi-Fi/Internet • Air-Con • Maid Service Included • Wow Factor • Walk to Village • Rural Location • Private Pool • Beach Nearby • Transfers Available • Babysitting Available • On-Site Concierge • Breakfast Included • Meal delivery service • Ideal for Babies & Toddlers • Ideal for Kids • Ideal for Teens • Walk to Restaurant • <1hr to Airport • All Bedrooms En-Suite • Satellite TV • Outstanding Landscapes • Outdoor Pursuit & Activities • Tourist Towns & Villages



Interior & Grounds

Interior

- Double bedroom with en-suite bathroom
- Fully equipped kitchen
- Living and dining room
- Access to the terrace and pool area

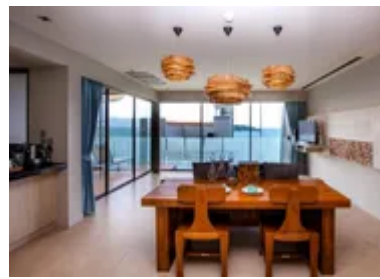
Exterior

- Swimming pool
- Sun loungers and parasols
- Covered terrace

Additional Facilities

- Complimentary mini-bar and drinks
- Complimentary welcome fruit
- Complimentary drinking water
- Torch & umbrellas
- Electronic safe
- Hairdryer
- Kalima toiletries
- Bathrobes & slippers
- Rain shower
- Coffee machine
- Complimentary mini-bar drinks
- In room audio system
- Wireless Internet
- Satellite TV

****Please note that these properties are all of a similar style, but may vary in layout, surroundings and furnishings.*



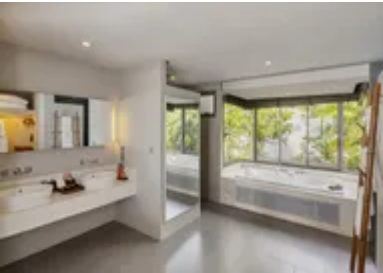
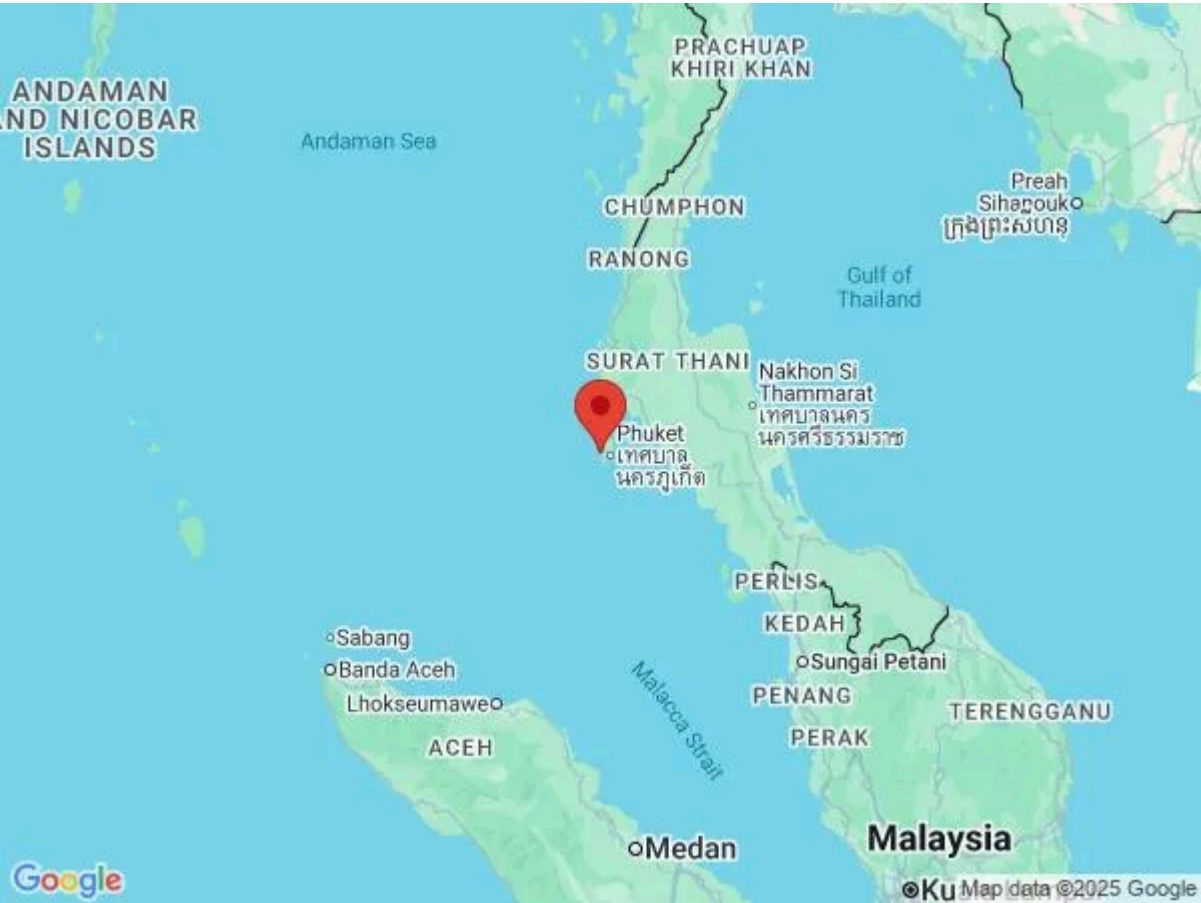
Location & Local Information

Nestled on the stunning west coast of Phuket, Kalima Resort & Spa offers an unrivaled location that seamlessly blends tranquility with adventure. Perched on a hillside, this luxurious haven provides breathtaking panoramic views of the Andaman Sea, creating an idyllic backdrop for your tropical getaway. Just minutes away from the vibrant nightlife and bustling streets of Patong Beach, our resort offers the perfect balance between serene relaxation and exciting exploration. Imagine waking up to the gentle sound of waves and the sight of emerald waters stretching to the horizon, all from the comfort of your elegantly appointed room.

Surrounded by lush greenery and pristine beaches, Kalima Resort & Spa is a gateway to nature's wonders. Explore the nearby Kamala Beach for a more secluded experience, or take a short drive to the bustling markets and cultural landmarks of Phuket Town. Whether you're seeking a romantic escape, a family adventure, or a solo retreat, our prime location provides the ideal setting for unforgettable memories. Indulge in the local cuisine, dive into crystal-clear waters, or simply unwind with a sunset view that will take your breath away. At Kalima Resort & Spa, every moment is a piece of paradise.

Local Amenities

Nearest Airport	Phuket Airport (32 km)
Nearest Ferry Port	Phuket Ferry Port (21 km)
Nearest Village	Ban Chai Lei (550 m)
Nearest Town/City	Phuket City (16 km)
Nearest Restaurant	Multiple Restaurants (In Resort)
Nearest Beach	Kalima Beach (1 km)



Nearest Golf	Golf Course (16 km)
--------------	------------------------

What we love

- Settle into a sun-lounger and enjoy the bird-song, the gentle waves washing up on the beach below and the warm sea air of Phuket beside your private pool!
- This privileged position on the hilltop ensures sublime, panoramic views over Patong and Kalim Bay whilst you enjoy some relaxation by the pool or perhaps even a tippie at the bar!
- Villa Kamon truly is a home of luxury, with a complimentary mini-bar selection, ultra-modern furnishing and jaw-dropping views across the sea!
- Pampering at Busaba Spa includes authentic Thai inspired spa treatments, massages and beauty therapies, to rejuvenate and revitalise guests with only 100% natural ingredients and essential oils!

What you should know...

- Please note that published rates are only valid for the current year. Any bookings for subsequent years will be on request only and correct rates will be confirmed at the time of booking
- Your sumptuous living room opens directly onto your private pool, so do take extra care when travelling with little ones
- Due to the fabulously well-connected location, some noise from across the resort may be audible

Terms & Conditions

- **Security deposit:** Credit card details are required 2 weeks prior to departure for pre-authorisation.
- **Arrival time:** 3 pm
- **Departure time:** 11 am
- **Energy costs included?:** Yes, included in the rental price.
- **Linen & towels included?:** Yes, included in the rental price.
- **Pets welcome?:** Not allowed.
- **Other Ts and Cs:** There is a mandatory dinner charge for the 31st December, New Year Eve Gala Dinner, 6,000 THB adult & 3,000 THB child.
- **Changeover day:** Flexible.
- **End of stay cleaning available?:** Yes. However, guests are required to leave the accommodation clean, tidy and in the same condition as on their arrival. Any extra cleaning, laundry, maintenance and/or rubbish disposal required will be charged against the security deposit.
- **Smoking Allowed?:** Smoking & Vaping are not permitted.
- **Minimum stay:** 2 - 3 nights, depending on season. All other durations on request.
- **Heating costs included?:** Yes, included in the rental price.
- **Pool heating charge?:** Not available on this property.
- **Tax:** Government tax and service charge included in the rental price.
- **Internet access?:** Wi-Fi internet access included.
- **Pool towels included?:** Yes, included in the rental price.