

Villa Meen

Region: Phuket Sleeps: 3

Overview

Escape to this exquisite 110 sq.m villa, where comfort meets tranquillity. Featuring a private swimming pool and an inviting open-plan design, the space includes a well-equipped kitchenette and a cosy dining area. Take in breathtaking views of the city skyline, with the vibrant Andaman Sea stretching out beyond. Whether you're sipping coffee at dawn or unwinding at sunset, every moment here promises to be unforgettable.

Perfect for couples seeking a peaceful retreat, the villa offers the ideal setting for romance. After a refreshing swim, savour a candlelit dinner of Thai and international cuisine in the privacy of your villa. Surrounded by nature's beauty and the soothing sounds of the sea, your stay will be filled with intimate moments and relaxation. Rediscover what it means to truly unwind in this serene haven, where every detail is crafted for your comfort and peace of mind.

Facilities

Resort Villa • Hairdryer • Romantic • TV • Wi-Fi/Internet • Golf Nearby • Air-Con • Walk to Beach • Great Value • Walk to Village • Private Pool • Beach Nearby • Maid Service Included • Cooking Classes Available • Transfers Available • On-Site Concierge • Breakfast Included • Meal delivery service • Walk to Restaurant • <1hr to Airport • Safety Deposit Box • All Bedrooms En-Suite • Outdoor Pursuit & Activities • Tourist Towns & Villages



Interior & Grounds

Interiors

- Ample living room with comfortable seating, TV and access to a balcony
- Open plan dining area for 2 people
- Well equipped kitchenette
- Bedroom with king size bed, access to a balcony and en-suite bathroom with bathtub and walk-in shower

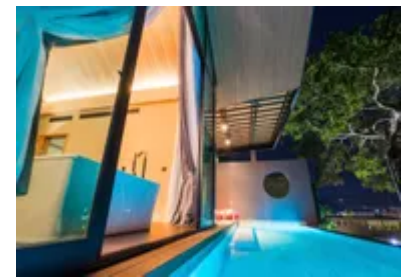
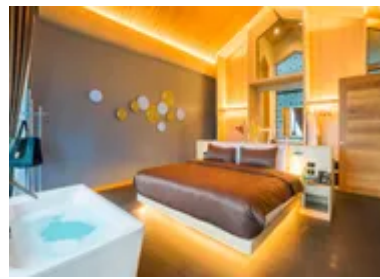
Exteriors

- Private plunge pool
- Ample balcony area
- Daybeds
- Outdoor dining

Additional Facilities

- Wi-Fi connection
- Air conditioning
- Hair dryer
- Safe box
- Toiletries

****Please note that these properties are all of a similar style, but may vary in layout, surroundings and furnishings.*



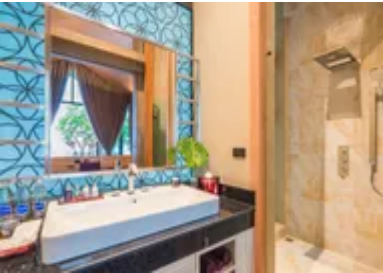
Location & Local Information

Nestled in the vibrant heart of Phuket, The Senses Resort overlooks the shimmering waters of Patong Beach, offering an escape into the island's tropical paradise. Surrounded by lush green hills, the area is alive with the sound of rustling palm trees and the scent of salty ocean breezes. Patong Beach, just minutes away, is the bustling epicenter of Phuket's energetic nightlife and sun-soaked days. Whether you're looking for exciting water sports, beachside dining, or vibrant street markets, the area delivers a perfect blend of adventure and relaxation.

Beyond the beach, The Senses Phuket is surrounded by cultural landmarks and local attractions that make it easy to experience the island's rich heritage. You can explore nearby temples, enjoy world-class shopping, or take in breathtaking sunsets from scenic viewpoints. This is the place where the beauty of nature, the charm of local culture, and modern amenities meet.

Local Amenities

Nearest Airport	Phuket Airport (40 km)
Nearest Ferry Port	Rassada Pier (17 km)
Nearest Village	Ban Phailin (280 m)
Nearest Town/City	Phuket City (14 km)
Nearest Restaurant	GoLek (350 m)
Nearest Beach	Patong Beach (3 km)
Nearest Golf	Red Mountain Golf Club (8 km)



What we love

- Stunning private plunge pool
- Beautiful views across the city and the azure-blue Andaman Sea beyond!
- The villa is located only a short distance from the gorgeous tropical beach
- Blending luxury and comfort, Villa Meen leaves nothing to be desired!

What you should know...

- There is a complimentary shuttle bus to and from Patong Beach that runs on a scheduled service throughout the day
- With a fitness centre and open-air pool deck, guests can choose a more active or restful relaxation
- For an authentic Thai cooking experience, the resort chef will teach guests how to prepare and cook some classic local dishes

Terms & Conditions

- **Security deposit:** A damage deposit of THB 1,000 per night, maximum THB 3,000, is required on check in at the resort. This will be collected as a cash or credit card payment. Guest should be reimbursed on check out. Deposit will be refunded in full, subject to an inspection of the property.

- **Arrival time:** 3 pm

- **Departure time:** 12 pm

- **Energy costs included?:** Yes, included in rental price.

- **Linen & towels included?:** Yes, included in rental price.

- **Pets welcome?:** Not allowed.

- **Changeover day:** Flexible.

- **End of stay cleaning available?:** Yes. However, guests are required to leave the accommodation clean, tidy and in the same condition as on their arrival. Any extra cleaning, laundry, maintenance and/or garbage disposal required will be charged against the security deposit.

- **Smoking Allowed?:** Smoking & Vaping are not permitted.

- **Minimum stay:** 2 - 4 nights, depending of season. All other durations on request.

- **Heating costs included?:** Yes, included in rental price.

- **Pool heating charge?:** Not available on this property.

- **Tax:** Government tax and service charge included in the rental price.

- **Internet access?:** Wi-Fi internet access included.

- **Pool towels included?:** Yes, included in rental price.