

Kalya Residence

Region: Koh Samui Sleeps: 10

Overview

Nestled into a lush hillside on Koh Samui's popular northern coast, the Kayla Residence is a striking holiday villa in the exclusive Panacea Retreat gated community just moments away from Bophut.

With four incredible bedrooms, this villa sleeps 8 adults, providing the perfect retreat for a family, group of friends or multiple couples travelling together. Incorporating both traditional Thai decor and stylish contemporary living, this stunning villa has everything guests need to relax in absolute luxury.

The entire residence is filled with natural light; Entering through a roofed gate, a stepping-stone pathway fringed by natural stone walls and overhanging greenery leads to the main living pavilion, running virtually the entire width of the villa. Its soaring, wood-lined, vaulted ceiling with wrap-around glass walls opens onto a dazzling terrace showcasing the magnificent views.

At one end, a spacious, comfortable lounge is dominated by a long L-shaped cream sofa and armchairs, set around a coffee table of natural sandstone. Light wood consoles and Thai lamps and artefacts create an inviting place for social gatherings – complete with a large flat-screen smart TV.

An impressive pedestal dining table is like a piece of art in the centre, serviced by a state-of-the-art show kitchen with island bar and branded appliances including a built-in wine cooler.

On the lower level, there are four ensuite double bedrooms that feature king-size beds, spacious built-in wardrobes, bathrooms with double vanity and rain shower, and terrazzo bathtub in the master bedroom.

Pale woods and natural finishes and fabrics create a light, comfortable ambience with tasteful occasional chairs and Thai art pieces. Flat-screen TVs and modern AV accessories make each room far more than a place to sleep.

The villa's generous infinity pool and sun terrace is the focal point; welcoming you to a swim up bar with sunken stools, barbecue and Thai sala for al fresco dining and relaxing by day or night.

Lying by the pool, sipping a cocktail under the stars or just gazing at the breathtaking views, your imagination is freed for your own stories to unfold in this gorgeous private retreat. Whether soaking up Samui's famous sunsets from the terrace or sipping cocktails by the pool, this is a special place to enjoy one of Asia's most beautiful islands.



Facilities

Private Pool • Golf Villa • Villa • Ideal for Kids • Air-Con • Maid Service Included • Chef/Cook Available • Great Value • Ideal for Teens • Beach Nearby • All Bedrooms En-Suite • Ground Floor Bed & Bath • Modern • <1hr to Airport • Parking Space • Wi-Fi/Internet • Outstanding Landscapes • Outdoor Pursuit & Activities • TV • Transfers Available • Babysitting Available • On-Site Concierge • Breakfast Included

Interior & Grounds

Ground Floor

- Master bedroom with king-size bed & en-suite bathroom with terrazzo bathtub & rain shower
- Three double bedrooms with king-size bed & en-suite bathroom with rain shower
- Staff area
- Access to the patio & pool area

First Floor

- Fully equipped kitchen
- Living & dining room

Exterior Grounds

- Swimming pool (20x5m)
- Sun loungers & parasols
- Dining & sitting area
- Covered terrace
- Barbecue
- Private parking

Additional Facilities

- Wi-Fi connection
- Air conditioning
- Satellite & cable TV
- Apple TV
- CD/DVD player
- iPod docks
- Pool toys,
- High chairs
- Baby cots
- Personal safes
- Fully-stocked mini bar in all bedrooms
- Mobile phone for guest use



Location & Local Information

Located high in the lush green hills above Koh Samui's popular resort of Bophut and charming Fisherman's Village, Panacea Retreat is just a 15-minute drive from the island's international airport and 10-15 minutes away from the white sandy beaches of Bophut, Big Buddha and the island's main tourist centre, Chaweng.

All five Panacea Retreat villas have spectacular views over Samui's north-east coastline and the Gulf of Thailand, to mystical islands such as Koh Phangan, popularly known as 'Full Moon Island', as well as Samui's striking interior with its jungle-clad hills and dramatic waterfalls.

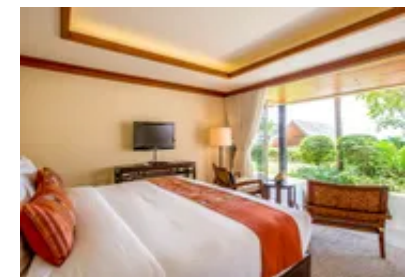
Circumnavigating Koh Samui by car takes just over an hour; nothing is a great distance away. The main ferry port of Nathon, with connections to the Thai mainland, is around 30 minutes' drive and the key jumping off point for boat excursions to offshore islands is a mere 10 minutes away at Big Buddha.

Panacea Retreat is a peaceful sanctuary far above the hustle and bustle of Koh Samui's coastal resorts, while retaining convenient proximity to Bophut beach and Fisherman's Village. The night market at Fisherman's Village is the scene of the island's biggest night market.

Every Friday evening and on certain holidays, literally hundreds of vendors set up shop to offer everything from Thai and international street food and snacks, to chic fashions, electronics and local souvenirs. The atmosphere is buzzing and an absolute must-visit for locals and tourists alike.

Local Amenities

Nearest Airport	Koh Samui Airport (9km)
Nearest Ferry Port	Nathon Pier (20km)
Nearest Village	Maenam Villa (6km)
Nearest Town/City	Koh Samui City (7km)
Nearest Restaurant	Pa Tuy Restaurant (2km)
Nearest Bar/Pub	Grecko Bar (3km)
Nearest Supermarket	Shopping Centre & Market (2km)
Nearest Beach	Bophut Beach (4km)



Nearest Golf	Santiburi Golf Course (11km)
Nearest Tennis	ACE Tennis Club Samui (5km)

What we love

- The beautiful infinity pool and stunning outdoor area will easily accommodate everyone during those long, lazy afternoons in the sun
- Located within the Bophut hills, guests have the perfect combination of convenience and seclusion
- With fabulous modern furnishings, a well-equipped kitchen and indulgent living areas, guests will find all the comforts of home combined with the luxury and elegance of Thailand's famous service industry

What you should know...

- Please note that published rates are only valid for the current year. Any bookings for subsequent years will be on request only and correct rates will be confirmed at the time of booking
- Please note that your booking will only be confirmed once we have checked availability with the owner
- A car is recommended if guests want to visit the Thai countryside

Terms & Conditions

- **Security deposit:** Credit card details are required 2 weeks prior to departure for pre-authorisation.
- **Arrival time:** 15:00 - 20:00
- **Departure time:** 11:00
- **Energy costs included?:** Yes, included in the rental price.
- **Linen & towels included?:** Yes, included in the rental price.
- **Pets welcome?:** Not allowed.
- **Changeover day:** Flexible.
- **End of stay cleaning:** Standard changeover clean included in the price. Guests are required to leave the accommodation clean, tidy and in the same condition as on their arrival. Any extra cleaning, laundry, maintenance and/or rubbish disposal required will be charged against the security deposit.
- **Smoking Allowed?:** Smoking & Vaping are not permitted.
- **Minimum stay:** 2 - 7 nights, depending on season. All other durations on request.
- **Heating costs included?:** Not available on this property.
- **Pool heating charge?:** Not available on this property.
- **Tax:** Tourist tax not applicable.
- **Internet access?:** Wi-Fi internet access included.
- **Pool towels included?:** Yes, included in the rental price.