

Malaiwana Penthouse

Region: Phuket **Sleeps:** 8

Overview

Nestled into the side of a hill overlooking Nai Thon Beach, The Malaiwana Penthouse offers a private sea-view haven for a relaxing tropical escape and a great base for exploring the endless beaches and lush landscapes of the island's lesser-visited northwest coastal area.

As part of the exclusive Malaiwana estate, The Malaiwana Penthouse provides the ultimate getaway for guests looking for peace and tranquillity amidst stunning natural beauty. With five bedrooms and great facilities for kids, this stylish holiday home is the ideal choice for a family, group of friends or multiples couples travelling together.

Designed for optimal views, the Penthouses' living areas and bedrooms are spread generously across the top floor of a three-floor unit. All living areas have sliding glass doors, making the most of Phuket's glorious tropical climate and allowing for a seamless flow between the stylish indoor and outdoor living areas.

The spacious open-plan dining, living and bar area have been stylishly designed, with direct terrace access and spectacular ocean views. The bright and modern kitchen is equipped with fantastic appliances such as a double fridge-freezer, oven and five-burner stove.

That being said, guests won't have to do much cooking themselves, as the penthouse comes fully staffed with a private chef who is on hand to cook breakfast, lunch, dinner from a suggestion menu of Thai cuisine with some Western selections. Guest requests are accommodated as far as possible (including special diets). The penthouse also includes a fabulous media room, where guests can gather together after a delicious meal and watch a movie.

The Penthouse sleeps 8 guests in total, with two master



suites and two guest rooms with twin beds. The two master suites include king-size beds, walk-in dressing rooms, easy pool access and spectacular sea views from floor-to-ceiling sliding windows on two sides. The two guest bedrooms are positioned to the rear of the Penthouse for privacy. All four bedrooms are luxurious havens, with flat-screen TVs and all their own lavish private bathrooms.

Outside, the inviting 20m infinity-edge pool enhances the vivid blue sea and sky vistas. The expansive terrace includes comfortable sun loungers, offering the perfect place to relax with a book, a chilled drink or take a snooze in the sun. The unique 'Floating' gazebo platform over the pool includes two chic wooden lounge chairs, and provides the perfect place to sit and have a drink.

There is also an outdoor barbecue, dining table, and lounge area, ideal for delicious alfresco meals prepared by the penthouse's chef, followed by a relaxing post-dinner drink. With its luxurious features, beachfront location and guaranteed privacy guests will want for nothing at The Malaiwana Penthouse.

Facilities

Maid Service Included • Watersports • Waterfront • Walk to Village • Indoor Games • Cots (Cribs) • Walk to Beach • Beach Nearby • Air-Con • Wi-Fi/Internet • Modern • Transfers Available • Babysitting Available • On-Site Concierge • Breakfast Included • Private Pool • Ideal for Kids • Ideal for Teens • Walk to Restaurant • <1hr to Airport • All Bedrooms En-Suite • Satellite TV • High Chair(s) • Walking/Hiking Paths • Outstanding Landscapes • Outdoor Pursuit & Activities • Tourist Towns & Villages

Interior & Grounds

The Villa

Malaiwana Penthouse sets high in this exclusive estate on Phuket's northwest coast, with panoramic sea and sunset views over Nai Thon Beach. There are 4 bedrooms and 4 bathrooms, and it can accommodate up to 8 people

Ground Floor

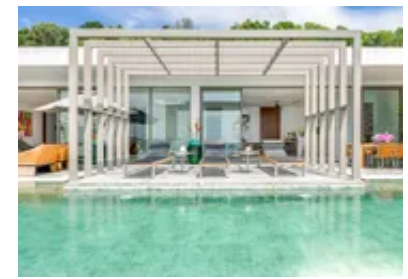
- Master bedroom (king size bed) with en-suite bathroom (bath)
- Double bedroom (king size bed) with en-suite bathroom (bath)
- Two twin bedrooms (twin beds convertible to kings) with en-suite bathroom (shower)
- Media room
- Fully equipped kitchen
- Living & dining room
- Access to the patio & pool area

Exterior Ground

- Swimming pool (20x5m)
- Sun loungers & parasols
- Large patio & garden area
- Dining & sitting area
- Covered terrace
- Private parking
- Barbecue

Additional Facilities

- Wi-Fi connection
- Four safety deposit boxes
- Satellite TV
- Mobile phones



Location & Local Information

The crystal-clear waters of the Andaman Sea and the powder-soft sands of Nai Thon Beach are in full view from every villa and residence in The Malaiwana Estate. Just a short walk or downhill drive away from the estate, this pristine one-kilometre-long beach on Phuket's peaceful northwest coast is perfect for sunning, swimming, snorkelling, stand-up paddling and sandcastle building.

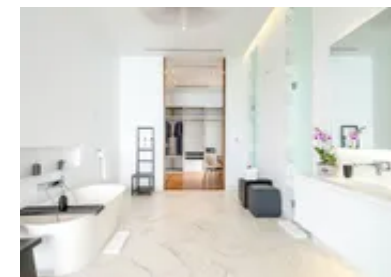
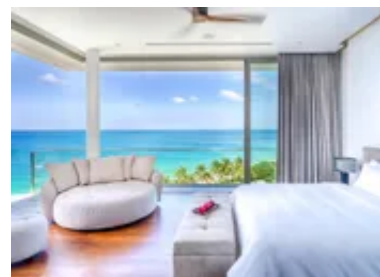
A tranquil village atmosphere prevails in this unspoiled corner of the island and the beach road is lined with low-key shops and cafés. Along the coast, numerous hidden coves and beaches are waiting to be discovered. The Malaiwana Estate is an easy and convenient 20-minute drive from Phuket International Airport.

Just up the road, the Trisara Resort offers fabulous dining, and other chic nearby venues include Dream Beach Club at Layan Beach and the beachfront restaurants at Bang Tao, eight kilometres to the south. Guests can explore the Andaman Sea aboard a luxury yacht charter, or on a scuba diving or snorkelling excursion.

The beautiful Nai Thon Beach is directly accessible from the villas, and the Raya Islands, Similan Islands, Koh Phi Phi and more are all within an easy day's sail. Guests can hop on a stand-up paddleboard at Nai Thon Beach and explore the coves and beaches of Phuket's rugged northern coastline, then make a stop at the tiny Banana Beach for a refreshing drink and snorkel session.

Local jungle excursions can also be arranged, where guests can discover Phuket's lush interior on a jungle trek to the waterfalls at Khao Phra Thaeo National Park just a 20-minute drive away. At the Phuket Elephant Sanctuary, which is in the same area, visitors can observe elephants rescued from the tourist trade. Phuket itself has a brilliant beach club scene: decadent brunches, DJ dance parties and romantic sunset dinners are all within a short distance of The Malaiwana Duplex.

About a one hour drive from the Malaiwana estate is the



Incredible natural hot springs of Phang Nga; the Hotspring Beach Resort and Spa is happy to accommodate day-trippers who are looking to relax on the spacious property. There are two hot pools as well as two cold pools, and an on-site restaurant to grab a bite to eat and refreshments before dipping into the pools once again.

Guests can take a cultural tour of Phuket’s rich history and traditional life, learn more about the history behind the restored Sino-Portuguese shops and mansions and sample some of the island’s best local cuisine. There are countless temples and religious monuments to visit in Phuket; those that seek to immerse themselves in the Thai culture will not be disappointed.

Guests can also learn how to make fragrant, and spicy Thai cuisine in a cookery class at the nearby Nahmyaa restaurant in Como Point Yamu resort, or try a class with the master of Thai fusion, Chef Tammasak “Noi” Chootong, who has opened a new branch of his celebrated Suay restaurant in nearby Cherng Talay.

Local Amenities

Nearest Airport	Phuket Airport (9km)
Nearest Ferry Port	Rassada Pier (34km)
Nearest Village	Thalang District (1km)
Nearest Town/City	Phuket City (33km)
Nearest Restaurant	Thian Seng Restaurant (400m)
Nearest Supermarket	Naithon Supermarket (1km)
Nearest Beach	Naithon Beach (550m)
Nearest Golf	Golf Course (8km)
Nearest Tennis	Tennis Court (35km)

What we love

- Stunning and infinity swimming pool with glorious sea views
- This exclusive villa accommodates large groups of up to 8 guests in total; even at maximum capacity this villa will feel spacious and luxurious
- This villa is just a short walk down to Nai Thon Beach
- This villa has its own private chef on hand to cook breakfast, lunch and dinner

What you should know...

- Please note that published rates are only valid for the current year. Any bookings for subsequent years will be on request only and correct rates will be confirmed at the time of booking
- Please note that your booking will only be confirmed once we have checked availability with the owner
- Airport transfers, car hire and taxi pick-ups can easily be arranged with the Malaiwana Penthouse manager at a small cost

Terms & Conditions

- **Security deposit:** Credit cards details may be requested as guarantee
- **Arrival time:** 2 pm
- **Departure time:** 12 pm
- **Energy costs included?:** Included in the rental price
- **Linen & towels included?:** Linen & towels included in the rental price
- **Pets welcome?:** Pets not allowed
- **Other Ts and Cs:** A minimum of 10 nights is required on the period of 20th Dec - 11th Jan
- **End of stay cleaning available?:** Included in the rental price
- **Smoking Allowed?:** No smoking inside the villa
- **Other 2:** 50% of deposit is payable at the time of the booking during high season (20th Dec - 11th Jan)
- **Minimum stay:** 3 - 10 nights
- **Tax:** Tourist Tax included in the rental price
- **Internet access?:** Wi-Fi connection included