

Malaiwana Duplex

Region: Phuket **Sleeps:** 8

Overview

Set in the ultra-exclusive Malaiwana estate with spectacular views over Nai Thon Beach, the four-bedroom Duplex residences offer a luxurious sea-view haven for a relaxing tropical escape. The Duplex residences provide the ultimate blend of modern tropical luxury with an easy island lifestyle amidst stunning natural beauty. With spacious interiors, stunning views and great facilities for kids, these spectacular holiday homes are the ideal choice for a family, group of friends or multiples couples travelling together.

Designed for optimal views, the chic Duplexes' living and dining areas offer plenty of open-plan space and direct access to the pool terrace. Sliding glass doors make the most of Phuket's glorious tropical climate and allow for a seamless flow between the stylish indoor and outdoor living areas.

The adjoining bright and modern kitchen is equipped with fantastic appliances such as a double fridge-freezer, oven and five-burner stove. That being said, guests won't have to do much cooking themselves, as the Duplexes comes fully staffed with a private chef who is on hand to cook breakfast, lunch, dinner from a suggestion menu of Thai cuisine with some Western selections.

Guest requests are accommodated as far as possible (including special diets). Each duplex also includes an upper floor sitting area with sofa and desk, where guests can gather together and watch the blazing sun go down.

The Duplexes sleep 8 guests in total, with two master suites and two guest rooms with twin beds that can be converted into one king bed. The two master suites include king-size beds, walk-in dressing rooms, easy pool access and spectacular sea views from floor-to-ceiling



sliding windows on two sides. All four bedrooms are luxurious havens, with flat-screen TVs and their own private marble bathrooms.

Outside towards the terrace, the inviting 15m marble infinity pool beckons; with comfortable sun loungers surrounding the sparkling blue pool, this provides the perfect setting to relax with a book in the sun. There is also an outdoor barbecue, dining table, and lounge area, ideal for a delicious alfresco meal prepared by the private chef, followed by a relaxing post-dinner drink.

Guests can cool down and rinse off the in the stylish outdoor shower. With its luxurious features, convenient location and guaranteed privacy, guests will want for nothing at The Malaiwana Duplexes.

Facilities

Watersports • Waterfront • Walking/Hiking Paths • Ground Floor Bed & Bath • Wi-Fi/Internet • Air-Con • Walk to Beach • Maid Service Included • Walk to Village • Indoor Games • Cots (Cribs) • Private Pool • Beach Nearby • Chef/Cook Available • Modern • Transfers Available • Babysitting Available • On-Site Concierge • Breakfast Included • Ideal for Babies & Toddlers • Ideal for Kids • Ideal for Teens • Walk to Restaurant • <1hr to Airport • All Bedrooms En-Suite • Satellite TV • High Chair(s) • Outstanding Landscapes • Outdoor Pursuit & Activities • Tourist Towns & Villages

Interior & Grounds

The Villa

Malaiwana Duplex is blending modern tropical luxury with an easy island lifestyle; the villa offers total tranquillity and impeccable hospitality to families or groups of friends. There are 4 bedrooms and 4 bathrooms, and it can accommodate up to 8 people

Ground Floor

- Two twin bedroom (single beds) with en-suite bathroom (shower)
- Fully equipped kitchen
- Living & dining room
- Access to the patio & pool area

First Floor

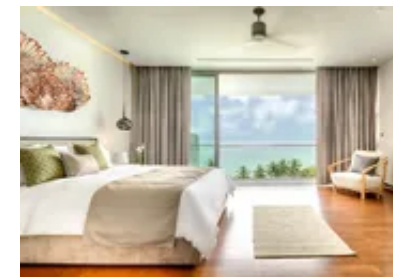
- Master bedroom (king size bed) with en-suite bathroom (shower)
- Double bedroom (king size bed) with en-suite bathroom (shower)

Exterior Grounds

- Swimming pool (15x4m)
- Sun loungers & parasols
- Lartge patio & garden area
- Dining & sitting area
- Covered terrace
- Private parking
- Barbecue

Additional Facilites

- Wi-Fi connection
- Four safety deposit boxes
- Satellite TV
- Mobile phones



Location & Local Information

The crystal-clear waters of the Andaman Sea and the powder-soft sands of Nai Thon Beach are in full view from every villa and residence in The Malaiwana Estate. Just a short walk or downhill drive away from the estate, this pristine one-kilometre-long beach on Phuket's peaceful northwest coast is perfect for sunning, swimming, snorkelling, stand-up paddling and sandcastle building.

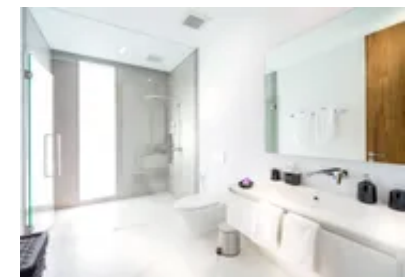
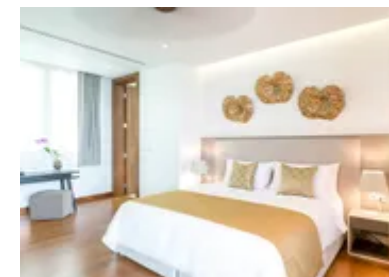
A tranquil village atmosphere prevails in this unspoiled corner of the island and the beach road is lined with low-key shops and cafés. Along the coast, numerous hidden coves and beaches are waiting to be discovered. The Malaiwana Estate is an easy and convenient 20-minute drive from Phuket International Airport.

Just up the road, the Trisara Resort offers fabulous dining, and other chic nearby venues include Dream Beach Club at Layan Beach and the beachfront restaurants at Bang Tao, eight kilometres to the south. Guests can explore the Andaman Sea aboard a luxury yacht charter, or on a scuba diving or snorkelling excursion.

The beautiful Nai Thon Beach is directly accessible from the villas, and the Raya Islands, Similan Islands, Koh Phi Phi and more are all within an easy day's sail. Guests can hop on a stand-up paddleboard at Nai Thon Beach and explore the coves and beaches of Phuket's rugged northern coastline, then make a stop at the tiny Banana Beach for a refreshing drink and snorkel session.

Phuket has also had a brilliant beach club scene: decadent brunches, DJ dance parties and romantic sunset dinners are all within a short distance of The Malaiwana Duplex. About a one hour drive from the Malaiwana estate is the incredible natural hot springs of Phang Nga; the Hotspring Beach Resort and Spa is happy to accommodate day-trippers who are looking to relax on the spacious property.

There are two hot pools as well as two cold pools, and an on-site restaurant to grab a bite to eat and refreshments before dipping into the pools once again.



Local Amenities

Nearest Airport	Phuket Airport (9km)
Nearest Ferry Port	Rassada Pier (34km)
Nearest Village	Thalang District (1km)
Nearest Town/City	Phuket City (33km)
Nearest Restaurant	Thian Seng Restaurant (400m)
Nearest Supermarket	Naithon Supermarket (1km)
Nearest Beach	Naithon Beach (500m)
Nearest Golf	Golf Course (8km)
Nearest Tennis	Tennis Court (35km)

What we love

- Stunning and infinity swimming pool with glorious sea views
- This exclusive villa accommodates large groups of up to 8 guests in total; even at maximum capacity this villa will feel spacious and luxurious
- This villa is just a short walk down to Nai Thon Beach
- This villa has its own private chef on hand to cook breakfast, lunch and dinner

What you should know...

- Please note that published rates are only valid for the current year. Any bookings for subsequent years will be on request only and correct rates will be confirmed at the time of booking
- Please note that your booking will only be confirmed once we have checked availability with the owner
- Airport transfers, car hire and taxi pick-ups can easily be arranged with The Malaiwana Duplex manager at a small cost

Terms & Conditions

- **Security deposit:** Credit cards details may be requested as guarantee
- **Arrival time:** 2 pm
- **Departure time:** 12 pm
- **Energy costs included?:** Included in the rental price
- **Linen & towels included?:** Linen & towels included in the rental price
- **Pets welcome?:** Pets not allowed
- **Other Ts and Cs:** A minimum of 10 nights is required on the period of 20th Dec - 11th Jan
- **End of stay cleaning available?:** Included in the rental price
- **Smoking Allowed?:** No smoking inside the villa
- **Other 2:** 50% of deposit is payable at the time of the booking during high season (20th Dec - 11th Jan)
- **Minimum stay:** 3 - 10 nights
- **Tax:** Tourist Tax included in the rental price
- **Internet access?:** Wi-Fi connection included