

Sujin Suite

Region: Phuket **Sleeps:** 3

Overview

Experience ultimate relaxation in our Sujin Suite, where modern design meets serene comfort. The suite features a beautifully appointed bedroom and a state-of-the-art living room with calming views of your private spa pool. The 14 sqm indoor Jacuzzi pool, illuminated by fibre-optic lighting, creates a mesmerizing ambience, perfect for unwinding after a day of adventure. Equipped with advanced in-suite automation, entertainment is at your fingertips, whether you're enjoying a movie from the suite's extensive library or listening to your favourite music on the Bose™ multimedia system.

Thoughtfully designed with your comfort in mind, the suites offer seamless indoor-outdoor living with resort and garden views. Enjoy modern conveniences like complimentary Wi-Fi, Creston™ lighting and blinds, and two large LCD TVs with satellite channels. From the refreshing outdoor rain shower to the in-villa Jura™ espresso machine, every detail is tailored to ensure your stay is effortless and rejuvenating. Indulge in a haven where relaxation comes naturally.

Facilities

TV • Boat Trips • Scuba Diving • Sailing • Canoeing/Kayaking • Watersports • Walking/Hiking Paths • Romantic • Walk to Beach • Ground Floor Bed & Bath • Wi-Fi/Internet • Air-Con • Maid Service Included • Walk to Village • DVD • Private Pool • Beach Nearby • Transfers Available • On-Site Concierge • Breakfast Included • Meal delivery service • Walk to Restaurant • All Bedrooms En-Suite • Home Cinema • Outstanding Landscapes • Outdoor Pursuit & Activities • Tourist Towns & Villages



Interior & Grounds

Interior

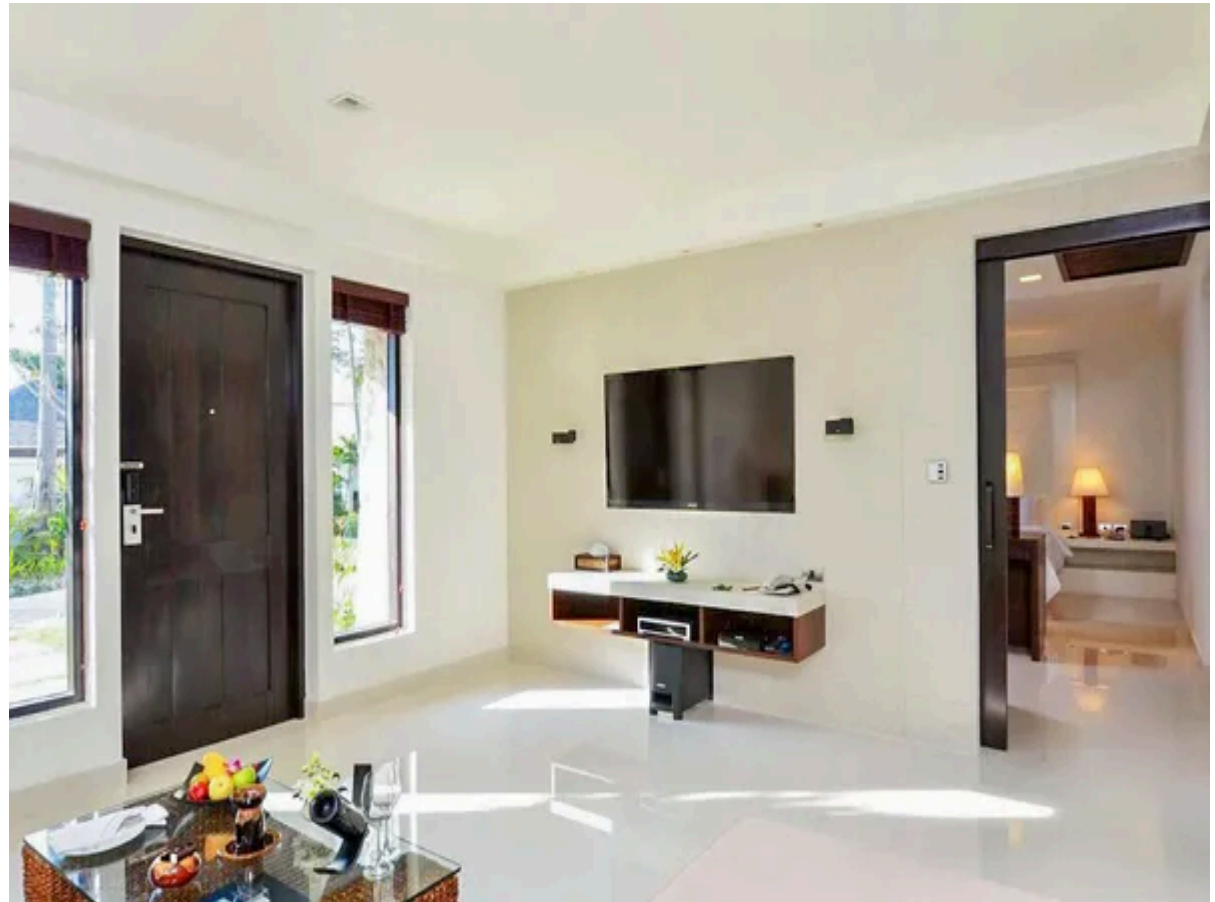
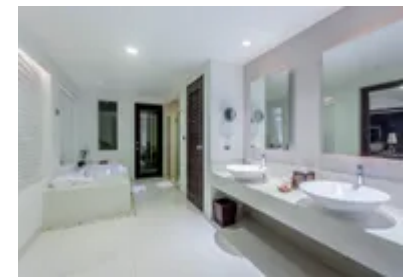
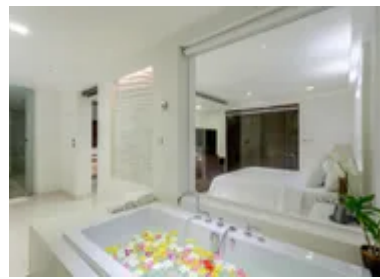
- Double bedroom with king size bed & 46" LCD TV with Satellite Feed
- Living room with 60" LCD TV with Satellite Feed
- Bathroom with buthtub, shower & jacuzzi
- Access to the terrace & pool

Exterior

- Private pool / Jacuzzi
- Sun loungers & parasols
- Sitting & dinind area
- Outdoor shower
- Outdoor day bed

Additional Facilities

- Complimentary Wi-Fi
- Individual air-conditioning
- DVD unit
- Apple iPod™ and Bose™ Sound Dock
- Bose™ Multimedia Theatre System
- Creston™ lighting controllers & electric blinds
- In-Villa Movie Library
- In-Villa Safe
- Mini-bar
- Jura™ Espresso Machine
- Tea facilities
- Hair dryer
- IDD telephone



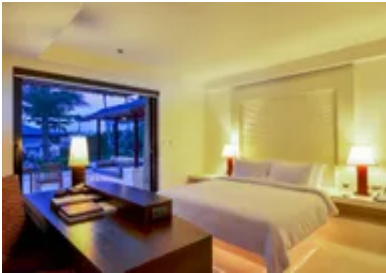
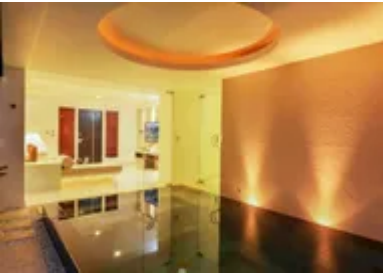
Location & Local Information

The Racha Resort is located on the serene Racha Yai Island, just 12 kilometers south of Phuket, Thailand. Accessible by a 30-minute speedboat ride, the island offers a peaceful escape with its pristine white-sand beaches and crystal-clear turquoise waters. Known for its vibrant coral reefs and rich marine life, the island is a top destination for snorkeling and diving, where visitors can explore colorful fish and even encounter manta rays or reef sharks. The surrounding landscape features lush, rolling hills and dense tropical vegetation, with hiking trails providing breathtaking views of the Andaman Sea and the island's coastline.

Racha Yai Island remains relatively untouched, with only a few small resorts and minimal development, offering privacy and tranquility to visitors. The laid-back atmosphere is ideal for those seeking relaxation in a secluded, natural setting. While the island is remote, it offers a few beachside restaurants and bars where guests can enjoy authentic Thai cuisine and sunsets over the ocean, making it a perfect destination for honeymooners, families, and nature lovers alike.

Local Amenities

Nearest Airport	Phuket Airport (60 km (via ferry))
Nearest Ferry Port	Racha Yai Ferry Port (500 m)
Nearest Village	Patok Bay (200 m)
Nearest Town/City	Phuket City (40 km (via ferry))
Nearest Restaurant	Cliff Restaurant (200 m)
Nearest Beach	Patok Beach (200 m)
Sightseeing	Siam Bay (1 km)



What we love

- Elegantly designed and offering luxury, with an indoor jacuzzi pool with fibre-optic lighting!
- The suite offers a terrace with spectacular views and an outdoor daybed!
- Situated on the edge of a beautiful white-sand beach!

What you should know...

- The suite sits on the island of Ko Racha Yai and is accessed by boat.
- The resort offers a range of amenities and services with complementary offers and at various fees.

Terms & Conditions

- **Security deposit:** Credit card details are required 2 weeks prior to departure for pre-authorisation.
- **Arrival time:** 2 pm
- **Departure time:** 11.30 am
- **Energy costs included?:** Yes, included in the rental price.
- **Linen & towels included?:** Yes, included in the rental price.
- **Pets welcome?:** Not allowed.
- **Changeover day:** Flexible.
- **End of stay cleaning available?:** Yes. However, guests are required to leave the accommodation clean, tidy and in the same condition as on their arrival. Any extra cleaning, laundry, maintenance and/or rubbish disposal required will be charged against the security deposit.
- **Smoking Allowed?:** Smoking & Vaping are not permitted.
- **Minimum stay:** 2 - 3 nights, depending of season. All other durations on request.
- **Heating costs included?:** Yes, included in the rental price.
- **Pool heating charge?:** Not available on this property.
- **Tax:** Government tax and service charge included in the rental price.
- **Internet access?:** Wi-Fi internet access included.
- **Pool towels included?:** Yes, included in the rental price.