

Club Suite

Region: Bangkok **Sleeps:** 3

Overview

Located in The Sukhothai Bangkok hotel's brand new Club Wing, The Club Suite exudes style and glamour, providing nothing but five-star luxury for guests. Following a six-month makeover, the new Club Rooms combine subtle Thai features with modern technology, such as Harman Kardon sound systems, digital bedside control panels and high-tech Japanese toilets. With crisp, opulent and contemporary Thai design, modern technology and superb in-room amenities, The Club offers guests an incredible experience at The Sukhothai.

With separate living and bedroom areas, as well as a private dining room, The Club Suite offers guests plenty of space to relax, dine and get some much-needed quality time. Upon entering the spacious Club Room, guests are greeted by the impressive floor to ceiling windows, allowing daylight to stream in and commanding spectacular views of the fast-paced urban city that is Bangkok.

The windows are double glazed, meaning The Club Suite is well sound-proofed and ensuring that guests will get a restful and peaceful nights' sleep, despite being in one of the busiest cities in the world. The room brings a sense of place and an elegant contemporary edge to interiors that are at once modern, and timeless. Polished teak interiors and impeccable detailing blend Thai aesthetics, technology and supreme guest comfort.

The large king-size bed features soft 100% duck down pillows and duvets, as well as 400-thread count cotton sheets. The bedroom also features a walk-in wardrobe, as well as a high-definition 65" LED television swivels to any direction, for guests to settle down after a busy day in the city and watch a movie.



The luxurious seating area features a second smaller television, as well as several plush sofas for socialising, and a desk for guests that need to get some work done. The Club Suite features a Nespresso machine, as well as Premium Saro lotus tea, blended especially for guests of The Sukhothai.

The spacious mirrored bathroom provides a deep-soaking Jacuzzi tub as well as a separate shower enclosure. Bottega Veneta luxury bath amenities are included, as well as plush terry robes and towels to complete guests' luxurious experience.

There is also a separate guest bathroom, as well as a laptop-size personal safe, a multi-line telephone and voice mail, and an impressive Harman Kardon audio system. With incredible facilities, opulent decor and unrivalled service, The Club Suite provide guests with a private oasis within the bustling city of Bangkok.

Facilities

Tennis Nearby • Historical Sites • Walking/Hiking Paths • Wi-Fi/Internet • Golf Nearby • Air-Con • Romantic • Maid Service Included • Wow Factor • Walk to Village • Shared Pool • Townhouse/Apartment • Transfers Available • On-Site Concierge • Breakfast Included • Meal delivery service • Ideal for Babies & Toddlers • Walk to Restaurant • <1hr to Airport • All Bedrooms En-Suite • Satellite TV • Outstanding Landscapes • Outdoor Pursuit & Activities • Tourist Towns & Villages

Interior & Grounds

The Club Suite

Located in The Sukhothai Bangkok hotel's brand new Club Wing, The Club Suite exudes style and glamour, providing nothing but five-star luxury for guests. There are a bedroom and a bathroom, and it can accommodate up to 3 people

Interior

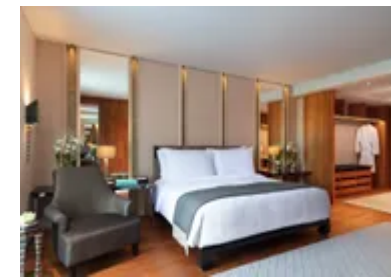
- Double bedroom with king-size bed & soft 100% duck down pillows & duvets
- Bathroom with deep-soaking tub & separate shower enclosure
- Sofa for extra person
- Living & dining area
- Guest bathroom
- Walk-in wardrobe
- Work desk with amenities & laptop-size personal safe
- Double-glazed floor-to-ceiling windows with city views

Exterior Hotel Facilities

- Spa Botanica located at the 2nd Floor
- 25-metre infinity-edged outdoor pool
- Fitness Studio with weights, cardio & cable machines
- Various restaurants, cafes & bars

Additional Facilities

- Nespresso machines
- Premium Saro lotus tea, blended for The Sukhothai
- 400-thread count cotton sheets
- Bottega Veneta luxury bath amenities
- Plush terry robes and towels
- Multi-line telephone & voice mail
- High-definition 65" LED television
- Harman Kardon audio system



Location & Local Information

The Sukhothai Bangkok is an urban oasis, providing a calm and tranquil space in the centre of Bangkok. Only steps away from the vibrant business and entertainment districts, and within minutes to the markets, the Chao Phraya river and all the shopping you could ever want to do. As a guest of The Sukhothai Bangkok, you will discover the superb convenience of the hotel's central location as much of the city can be reached with ease. While The Sukhothai Bangkok itself is a landmark to discover, why not visit Bangkok itself?

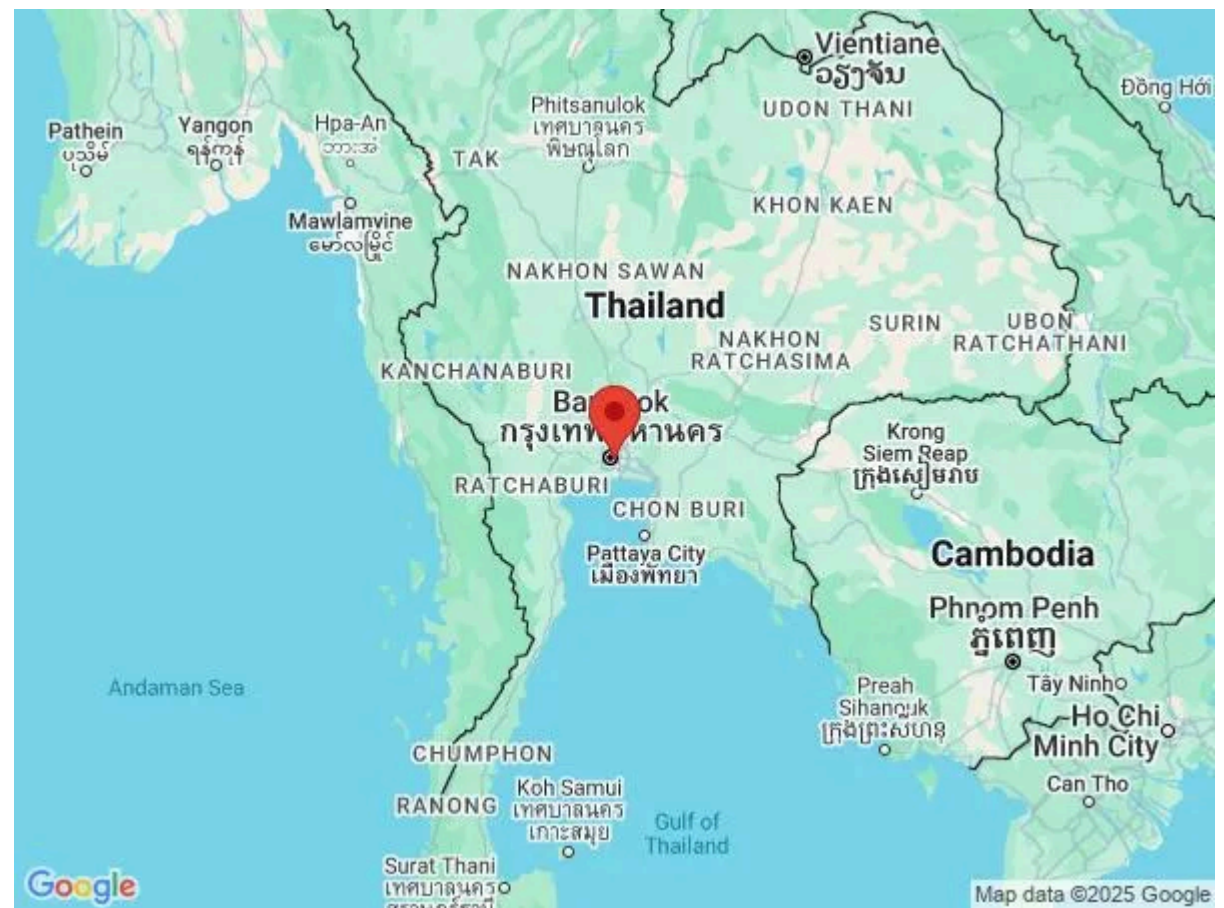
Situated in the heart of Bangkok's business and embassy district on South Sathorn Road, with easy access to the BTS Skytrain, MRT subway system and the major motorways, The Sukhothai Bangkok is your gateway to everything that makes Bangkok one of the world's most dynamic cities. Notable attractions include the Patpong Night Market, Sukhumvit Road and the Chao Phraya River.

Lumpini Park, Bangkok's largest most beautiful park is a five-minute jog away and provides a taste of the inner city's true urban heart. From cooking schools to temples and historical landmarks, let the hotel's Concierge introduce the best to do and see in Bangkok. Visit Wat Pho To See The Reclining Buddha or the famous Grand Palace.

Marvel at the sheer scale and bountiful offerings of malls and luxury shops, all within easy reach by cab or subway. Siam Paragon is one of the most famous shopping centres in the city; find everything from high street fashion to high-tech gadgets, home décor and exotic sports cars.

Other highlights include the 16-screen Paragon Cineplex, Kinokuniya bookstore, gourmet cafés and restaurants and Siam Ocean World aquarium. CentralWorld Siam, the largest shopping mall in Thailand, has a well-rounded collection of shops and entertainment outlets catering to the modern lifestyle.

CentralWorld's youthful dynamic feels welcoming and is always buzzing with life. Also well-known among tourists



as a haven for all things affordable, MBK is like an indoor Chatuchak market, with some 2,000 shops occupying seven floors of retail spaces. Its main selling point is the price and diversity of its collection of products, particularly mobile phones, photo equipment, video games, luggage, streetwear and gold ornaments.

The vibrant restaurant and bar scene of Sukhumvit Road is easy to reach by taxi, BTS Skytrain or MRT underground train. Guests will have plenty of restaurants and bars to choose from, with all kinds of cuisine. A short taxi ride away is the Saphan Taksin Pier, where public ferries provide cruises along the famous Chao Phraya River, otherwise known as the River of Kings.

Guests must also visit the Patpong Night Market, located just a short taxi drive away to Silom Road, where guests can experience the city's notorious nightlife.

Local Amenities

Nearest Airport	Suvarnabhumi Airport (31km)
Nearest Ferry Port	Wat Muang Kae River Station (5km)
Nearest Train Station	Sathon Tai Road Bus Station (100m)
Nearest Village	Prueksasiri Village (1km)
Nearest Town/City	Bangkok City (9km)
Nearest Restaurant	Romsai Restaurant (130m)
Nearest Bar/Pub	Craft Room Sathorn (400m)
Nearest Shop	B-Quik North Sathorn (450m)
Nearest Supermarket	Nutha Alley Supermarket (1km)
Nearest Beach	Chao Mae Beach (84km)

Nearest Golf	Leadbetter Indoor Golf Academy (4km)
Nearest Tennis	Le Smash Tennis Club (6km)

What we love

- The Club Suite is part of a large renovation project at The Sukhothai Hotel, where 33 rooms and suites have been updated and redesigned under the eye of American architect and interior designer, Ed Tuttle
- The Club Suite offers guests an opulent and spacious haven where they can relax in complete privacy, with five-star luxuries at their fingertips
- Guests have access to The Club Lounge on the sixth floor, offering a la carte breakfast, afternoon tea, and signature cocktails
- Located in the heart of Bangkok's business and embassy district on South Sathorn Road, guests are in a fantastic location at The Sukhothai
- The hotel's award-winning La Scala Italian Restaurant, located in the same building, is also set to reopen to the public after completing its renovation
- Other new facilities include a new high-tech fitness centre located in the basement and a renovated 25-metre-long outdoor infinity pool surrounded by 12 cabanas

What you should know...

- Please note that published rates are only valid for the current year. Any bookings for subsequent years will be on request only, and correct rates will be confirmed at the time of booking
- Please note that your booking will only be confirmed once we have checked availability with the hotel
- The operational hours of the Club lounge (located on the 6th floor) is from 6.30am - 10.00pm daily
- Complimentary daily breakfast served from 6.30am - 10.30am on weekdays, and from 6.30am - 11.00am at the weekends
- Complimentary daily afternoon tea from 2.00 pm - 4.00 pm
- Complimentary evening cocktails, selected beverages and canapés from 5.30 pm - 7.30 pm
- Complimentary premium hi-speed wireless Internet access, for up to six devices per room

Terms & Conditions

- **Security deposit:** Credit cards details may be requested as guarantee
- **Arrival time:** 2 pm
- **Departure time:** 12 pm
- **Energy costs included?:** Included in the rental price
- **Linen & towels included?:** Linen & bath towels included in the rental price
- **Pets welcome?:** Pets not allowed
- **Changeover day:** Flexible
- **End of stay cleaning available?:** Included in the rental price
- **Smoking Allowed?:** Not permitted
- **Minimum stay:** 2 nights
- **Tax:** Tourist Tax included in the rental price
- **Internet access?:** Wi-Fi connection included in the rental price