

# Castle Mago

**Region:** Tuscany   **Sleeps:** 28

## Overview

Castle Mago is a wonderful 16th Century castle in a perfect position enjoying a lovely panorama over the countryside with views to the Elba Island and the sea beyond. The villa has its own exclusive grounds complete with a rose garden and an entrance garden with private parking, outside living space for relaxing, dining al fresco and a private outside swimming pool 6m x 12m. This romantically beautiful historic residence retains all the original characteristics and period furnishings yet has all modern comforts and offers a wide range of facilities and services to enhance your stay.

This unique ancient castle, once the abode of Leopold II Grand Duke of Tuscany, is in a peaceful and private location in the countryside yet just 1 km from the nearest town Venturina Terme and only ten minutes driving to the lovely Tuscan coast and nearest sandy beaches. A private avenue of cypresses and pines leads to the private automatic gate of the castle through the grounds for the first glimpse of this imposing property that has a romantic facade of ivy.

The interior of the villa is just as amazing with characteristic high ceilings and furnished with antiques, oil paintings and family heirlooms. The ground level of the villa is composed of various lounge rooms with period furnishings in keeping with the style of the castle. There is a large entrance hall hung with ancient paintings and coats of arms, off which there are three lovely living rooms, two of these living rooms with fireplace and sofas, one of these with Sky television and DVD player and hi-fi music. The third one is a reading living room with a computer desk with antique wooden desk. On the same level there is a professional fully equipped kitchen and another small room next to the kitchen with a fridge and all the necessary staff for the meals service. There is a lovely dining room with fire place decorated with frescoes and majolica tiles with a big rectangular table for all the guests. Two double bedrooms are located on the ground floor.

From the main entrance hall staircases to the left and/or to the right lead to the middle and upper floors of the castle and the ten characteristic bedrooms with their ensuite bathrooms (3 double bedrooms, 6 suites, and the special Grand Duke Master suite) each individually decorated with different colour schemes, and many featuring hand painted ceilings, frescoes and numerous antique pieces. The bedrooms are equipped with the modern comforts such as air conditioning and an unlimited fast wifi connection 20 Mbps download and 6 Mbps upload. The Wi Fi internet connection cover also the whole inside villa, the rose garden and the pool area.

The mature grounds sweep all around the castle and the main entrance hall also opens out onto the lovely rear rose garden where there is a pretty al fresco dining area with a marble rectangular table for all the guests, as well as an outside living area with comfortable settees and umbrellas perfect for relaxing whilst enjoying the view towards the rose garden. Original stone steps lead down from the garden to the villa's private swimming pool (12m x



6m) situated in a secluded position below. The pool area is shaded by pines and overlooks the olive grove. The owners of Castle Mago are very hospitable and they and the villa staff take pride in the services they offer. A whole manner of arrangements can be made (on request payable locally) ranging from catering services including lunches and dinners, laundry, extra housekeeping and even day trips and excursions are options available.

When you can tear yourself away, the beautiful coast of Tuscany with its lovely beaches is just minutes away, and there are many pretty towns to explore locally. The area is well known too for its wine production, thermal spas, nature reserves and lovely countryside. A little further afield are other famous Tuscan towns such as Florence, Siena and Pisa all well worth a visit. Even the island of Elba is accessible via nearby ferry connections or by private boat. Castle Mago really is a unique property in a great location for a truly unforgettable holiday.

## Facilities

Ideal for Parties • Stag/Hen Allowed • Wine Tasting • Fishing • Air-Con • Golf Nearby • Wi-Fi/Internet • Walking/Hiking Paths • Chateaux & Castles • Weddings • Cots (Cribs) • Private Pool • Rural Location • DVD • Walk to Village • Chapel on Site • Quirky (Unique) • Maid Service Included • Beach Nearby • Chef/Cook Available • Heritage Collection • Pre-Stocked Fridge Available • Yoga Classes Available • Catering Available • Breakfast Available • Babysitting Available • On-Site Concierge • Bathroom Toiletries • Ideal for Kids • Ideal for Teens • Pets on Request • Walk to Restaurant • All Bedrooms En-Suite • Satellite TV • Working Fireplace/Woodburner • Heating • Caretaker/Owner on Site • High Chair(s) • Fenced Grounds • Parking Space • Outstanding Landscapes • Outdoor Pursuit & Activities • Tourist Towns & Villages

# Interior & Grounds

## Castle Interior

- 1) 20-guest rate = 10 bedrooms
- 2) 24-guest rate = 12 bedrooms
- 3) 28-guest rate = 14 bedrooms

There are 4 additional independent apartments onsite, which can be rented on request, making the total number of guests as 52 with 26 bedrooms. Please enquire for further information.

### Ground Floor

- Large entrance hall with antique table
- 3 Living rooms (2 with fireplace and 1 reading/computer room) with settees
- sky television and DVD player
- Washing/ironing room
- Service bathroom on the ground floor
- Dining room with fireplace, table and chairs
- Professional kitchen with cooker (5 gas rings and electric oven), fridge/freezer, fridge, dishwasher, microwave, american coffee machine and ice maker (accessed by catering staff only)
- Second kitchen (for the use of guests, available on request)
- Side room off the kitchen
- Double bedroom with en-suite bathroom

### Middle Floor (left side)

- Double bedroom n.8 (can convert to twin on request) with ensuite bathroom with bathtub/shower
- Double bedroom n.9 (can convert to twin on request) with ensuite bathroom with bathtub/shower

### Upper Floor (left side)

- Suite n.7 (can convert to twin on request) with double bedroom with an ensuite bathroom with only shower, a separate living room and access to a large panoramic terrace with living space and an automatic red terrace curtain.
- Suite n.4 (can convert to twin on request) with double bedroom with an ensuite bathroom with bathtub/shower and a separate living room.
- Double bedroom n.5 (can convert to twin on request) with ensuite bathroom with bathtub/shower
- Double bedroom n.6 (can convert to twin on request) with ensuite bathroom with only shower
- Double bedroom n.10
- Double bedroom n.11
- Shared bathroom for bedrooms n.10 and n.11

### Upper Floor (right side)

- Master suite (Grand Duke) with double bed with ensuite bathroom with bathtub/shower, living and access to a small balcony.
- Suite n.1 (can convert to twin on request) with double bedroom with an ensuite bathroom with bathtub/shower and a separate living room.
- Suite n.2 (can convert to twin on request) with double bedroom with an



- ensuite bathroom with bathtub/shower and a separate living room.
- Suite n. 3 with double bedroom and en-suite bathroom and living room.

#### *Top Mansard Floor (Tower)*

- Double bedroom with ensuite bathroom with bathtub/shower

**\*\*All bedrooms are equipped with air conditioning.\*\***

#### **Outside Grounds**

- Large gardens and grounds
- Terrace
- Swimming pool (12 x 6 m). Open approximately from end-May to the end of October)
- Private parking spaces

#### **Facilities**

- Living room with SKY satellite TV and DVD player
- Computer room
- Baby equipment is available on request
- Fast Wi-Fi (all ground floor lounges, all rooms, rose garden and pool area)



# Location & Local Information

Castle Mago is the former residence of Leopold II, Grand Duke of Tuscany. It is situated between the renowned cities of Siena and Lucca, in a triangle of high quality wine production. Notable are Sassicaia and Ornellaia. Today this magnificent "Historical Residence", offers the chance to experience history with all the modern comforts of the 21st century. The castle is open during the summer months and is rented weekly as an exclusive, private villa.

As this is a land famous for the production of DOC and DOCG wines known all over the world, one of the recommended activities is a tour of local producers, such as Sassicaia and Ornellaia. Tours should be booked in advance directly from the castle. Visits can be personalized according to taste and expertise. Wine experts will guide and assist you throughout the itinerary.

Castle Mago is located on the Etruscan Coast in an area with many tourist attractions, including historical sights, art, culture and cuisine. With its splendid medieval towns and landscape, the Etruscan Riviera has many interesting things to discover.

Some places and events worth mentioning are:

- Campiglia Marittima with its festival "Apriti Borgo" (medieval festival, August).
- Suvereto with "Calici Sotto le Stelle" (wine festival, August).
- Bolgheri and its renowned wines, such as Sassicaia and Ornellaia.
- Populonia and Baratti's Etruscan tombs.
- The beautiful Elba Island.
- San Vincenzo and its "Palio della Costa Etrusca" (horse race on the beach, Easter Monday).
- Massa Marittima with "Balestro del Girifalco" (May & August).

A visit to the outstanding Castle Mago will make any holiday an unforgettable experience.

## History

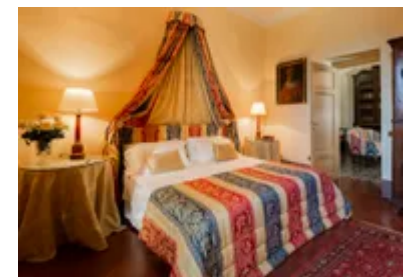
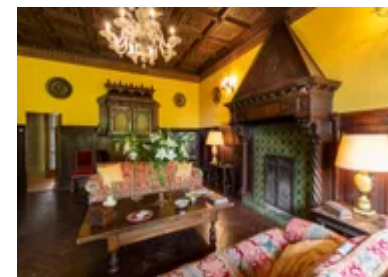
Castle Mago was built during the first decade of the 16th century and became the residence of Leopold II, Grand Duke of Tuscany, during the reclamation of the Maremma land.

Leopold II was born on 3 October, 1797 in Florence and died in Rome on 29 January, 1870. He was the last Grand Duke of Tuscany, reigning from 1824 and abdicating in 1859.

Castle Mago was been the residence of many Grand Dukes of Tuscany, but Leopold II lived there the longest. Documents dating back to 1529 demonstrate the existence of a former palace that was renovated to become the administrative headquarters of the Campiglia Marittima Railways.

In 1860, the Castle passed into the hands of the Merciai family, who transformed it into a "Historical House" open to all those who wished to enjoy an unforgettable holiday while discovering this beautiful land rich in history and art.

Subsequent works carried out since 1900 have been supervised by the Italian Institute of Fine Arts. Today, the castle represents one of the most important monuments of the Tuscan Maremma.



### Distances from major touristic sights

- Castagneto Carducci – Bolgheri and its vineyards: 7 km
- Golf of Baratti: 10 km
- Populonia and the Etruscan Tombs: 10 km
- Pelagone Golf Club: 25 km
- Punta Ala: 20 km
- Massa Marittima – art and wine itineraries: 30 km
- Volterra – Alabaster, “Balze” and museums: 50 km
- San Gimignano and its towers: 75 km
- Siena – Piazza del Campo – Chianti: 95 km
- Lucca: 100 km
- Florence: 160 km
- Rome: 250 km

### Distances from major International Airports

- Pisa: 80 km
- Florence: 160 km
- Rome: 220 km
- Grosseto (only for private flights): 60km

### Local Amenities

|                    |                                    |
|--------------------|------------------------------------|
| Nearest Airport    | <b>Pisa</b><br>(91-100 km)         |
| Nearest Ferry Port | <b>Livorno</b><br>(81-90 km)       |
| Nearest Village    | <b>Venturina</b><br>(1 km)         |
| Nearest Town/City  | <b>Livorno</b><br>(81-90 km)       |
| Nearest Restaurant | <b>Otello Restaurant</b><br>(1 km) |
| Nearest Bar/Pub    | <b>Quattro strade</b><br>(1 km)    |
| Nearest Beach      | <b>Baratti</b><br>(9 km)           |
| Nearest Golf       | <b>Punta ala</b><br>(31-35 km)     |

## What we love

- A truly unique Tuscan castle with art, antiques, hidden doors, beautiful grounds, marble floors, frescoes, high ceilings.....and a ghost!
- The master suite has a fireplace and grand piano!
- A 500 year old castle with ice-maker, coffee machine, wifi, satellite TV and all the luxury modern conveniences anyone could hope for.

## What you should know...

- The castle has multiple stair cases both inside and outdoors. Please take care and supervise children.
- Original decor and antique furnishings may not suit everyone's taste.
- Please note that only the 28 guest prices include the rental of the entire castle (14 bedrooms). Please check the 'Features' tab for details and enquire for further information.
- Please note the professional kitchen is to be accessed by in-house staff only. There is a second kitchen for the use of guests, available on request.
- There are 4 additional independent apartments onsite, which can be rented on request, making the total number of guests as 52 with 26 bedrooms. Please enquire for further information.

# Terms & Conditions

- **Security deposit:** €2500 charged to client's credit card by the owner upon arrival and refunded two weeks after departure, subject to full inspection.
- **Arrival time:** 4.00 p.m. to 7.00 pm. Check-in outside this time may be subject to an extra cost. Please enquire for more details.
- **Departure time:** By 10.00 a.m.
- **Energy costs included?:** Extra €250 per day, payable locally on arrival by cash or card.
- **Linen & towels included?:** Yes, and mid-week change included.
- **Pets welcome?:** On request only at an additional cost and with prior agreement with the owner.
- **Other Ts and Cs:** Please note home security devices may be installed at the villa, please enquire for further information. The castle has multiple stair cases both inside and outdoors. Please take care and supervise children. Please note that only the 28 guest prices include the rental of the entire castle (14 bedrooms). Please check the 'Features' tab for details and enquire for further information There are 4 additional independent apartments onsite, which can be rented on request, making the total number of guests as 52 with 26 bedrooms. Please enquire for further information. Please note the professional kitchen is to be accessed by in-house staff only. There is a second kitchen for the use of guests, available on request. Copies of all guests' passports must be provided to the owners at least one week before the day of arrival for police registration. A guarantee credit card (organised by the owners) is compulsorily required on arrival if used for extra services.
- **Changeover day:** Saturday in high season. Flexible during all other periods.
- **End of stay cleaning available?:** Extra €500, payable locally. However, guests are required to leave the accommodation clean, tidy and in the same condition as on their arrival. Any extra cleaning, laundry, maintenance and/or rubbish disposal required will be charged against the security deposit.
- **Smoking Allowed?:** Outside only.
- **Minimum stay:** 7 nights in high season. 2 nights during all other periods.
- **Tax:** Italian Visitors Tax payable locally (typically costs approximately between €1-€10 per adult per night- please enquire if exact amount is required).
- **Internet access?:** Wi-Fi internet access included (all ground floor lounges, all rooms, rose garden and pool area).
- **Pool opening dates?:** The pool is open approximately end-May to end-October. Please note that pool opening dates are subject to local weather conditions and pool maintenance requirements and that cooler months may not be suitable for swimming.
- **Property Licence Number:** IT049002B97I2TIHXF