

Chateau Chemin Vert

Region: Languedoc **Sleeps:** 16

Overview

As featured in Mansion Magazine!

Stay in a historic château in the heart of a bastide village with distant views of the Pyrenees. Château Chemin Vert offers charm, character and even a swimming pool near some of southern France's most beautiful towns and countryside in the enchanting region of Languedoc.

The spirit of this grand château is felt throughout with elegant furnishings and so many historic features from the panelled walls and carved fireplace in the splendid living room to ornate ceilings and rich fabrics in the four main bedrooms. Recent renovations also add a touch of contemporary style such as in the bright *orangerie* with its dining table and the new family suite upstairs sleeping up to four guests. Other modern amenities include Wi-Fi, satellite TV and a gym.

Doors from the library, grand salon and *orangerie* lead out to a large terrace and barbecue designed for al-fresco dining or just a quiet aperitif as you gaze out to the houses and hills beyond. Wander through the vast gardens, see what vegetables may be growing or which fruits are in season and follow the gently sloping lawns to the 12m long swimming pool with its pool terrace perfect for sunbathing. Play *pétanque* on the excellent court with village views beyond the walled garden. It's quite unique to have such a spacious garden, pool and high standard of *pétanque* pitch in a historic village château.

Every morning you can wander into the local bastide village to pick up freshly baked bread and pastries. Explore the lanes leading from the main arcaded square with its plane trees, pretty fountains and delightful Saturday morning market. Enjoy the cafes and restaurants before returning home to your own château in minutes. You may even be fortunate enough to visit when festivities take over the village and the ambience is especially wonderful.

Visit other picturesque market villages and towns, swim or canoe in the nearby lake, cycle or hike on one of the many stunning trails and discover the fascinating Cathar history of this region. Being in the foothills of the Pyrenees, even skiing is possible in winter months or enjoy beautiful walks through the magnificent mountains so near. This is also a great location for visiting the great city of Carcassonne, a UNESCO World Heritage site, just under an hour away.

Whether it's the enchanting villages and towns, brilliant landscapes or captivating history, you can experience so much of the Languedoc region at Château Chemin Vert, right from your very doorstep.



Facilities

Chef/Cook Available • Weddings • Great Value • Chateaux & Castles • Tennis Nearby • Spa/Massage • Walk to Village • Romantic • Indoor Games • Gym/Fitness Room • Maid Service Available • Wi-Fi/Internet • Outdoor Ceremony • Flexible Catering Options • Heritage Collection • Allow External Caterers • Wellness • Indoor Reception Available • Nearby Church/Chapel • Wine-Tasting Available • Transfers Available • Babysitting Available • Private Pool • Pool Safety Feature • Boules/Petanque • Ideal for Kids • Changing mat • Ideal for Teens • Walk to Restaurant • <1hr to Airport • All Bedrooms En-Suite • Satellite TV • Outdoor Games • Heating • High Chair(s) • Canoeing/Kayaking • Walking/Hiking Paths • Wine Tasting • Cycling • Horse Riding • Fishing • Outstanding Landscapes • Outdoor Pursuit & Activities • Tourist Towns & Villages • Historical Sites

Interior & Grounds

- 1) 12-person price = 5 bedrooms (1-5)
- 2) 16-person price = 6 bedrooms (1-6)

Château Interiors

Ground Floor

- Living room with doors leading to terrace
- Second living area
- Library/study with door leading to terrace
- Gym/massage room
- Orangerie with dining table and doors leading to terrace
- Fully-equipped kitchen

Lower Ground Floor

- Entrance (from the village street)

First Floor

- Bedroom One: Master bedroom with super king-size bed and bathroom with walk-in shower and separate WC. Door from the bathroom leading to a terrace
- Bedroom Two: Double bedroom with super king-size double/twin bed and en suite bathroom with shower, small bath and WC
- Bedroom Three: Double bedroom with super king-size double/twin bed and en suite bathroom with shower, bath and WC
- Bedroom Four: Double bedroom with super king-size bed and bathroom with walk-in shower and WC

Separate Wing (accessed via three steps from the entrance hallway to Bedroom Four, or can be via a separate staircase from the main entrance)

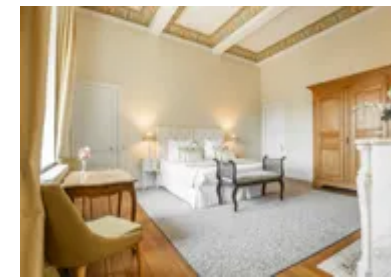
- Bedroom Five: Family suite with small double bedroom with queen bed and bedroom with with double bed and sitting area. En suite bathroom with shower and WC

*Bedroom six is in the back wing of the house, just below the fifth bedroom. It is accessed through a hidden door from the mid-level of the staircase, located next to the guest laundry room - **included in the 16-person price only***

- Bedroom Six: Double bedroom with with king size bed separate and small twin bedroom. En suite bathroom with shower and separate WC

Outside Grounds

- Swimming pool (12mx6m, depth: 2m) with safety alarm, open approximately June to end-September
- Terrace for al-fresco dining
- Barbecue
- *Pétanque* court (international standard)
- Vegetable garden and fruit trees



- Enclosed gardens (sloping or terraced in parts)

Facilities

- Wi-Fi
- Heating
- Satellite TV
- Games
- Gym
- *Pétanque*
- Hairdryers

Location & Local Information

Château Chemin Vert is located in a bastide village in the Aude department of southern France, near the border with Ariège, around 50km south-west of Carcassonne.

Public car parking is just a minute's walk away and you will find the entrance of the château just off the narrow pavement on one of the village roads. Stairs will take you up to the main floor which leads to the gardens and terraces.

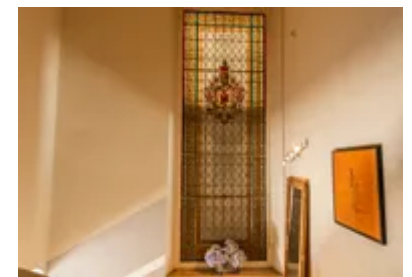
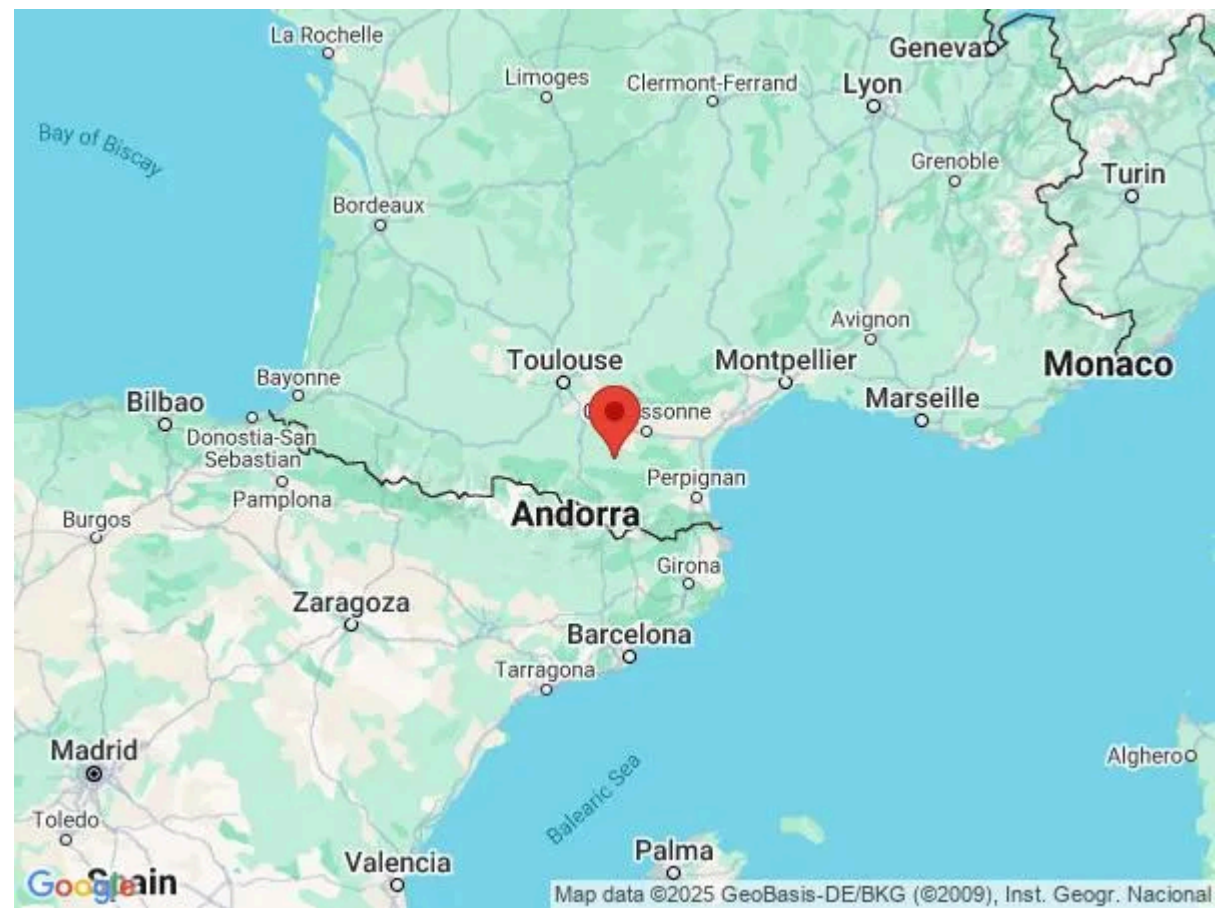
The village itself is full of charm and has many festivities taking place throughout the spring, summer and autumn from medieval music festivals to the occasional *Vide Grenier* (flea market). You'll find a *boulangerie*, *chacuterie*, pharmacy and a few cafes and restaurants, as well as a small supermarket just on the village's edge. There are also tennis courts just outside the village. The Saturday morning market is one of the prettiest in the region.

There are some wonderful walking and cycling routes across the region including Le Chemin Vert, an old railway line which is now a path linking Mirepoix and Lavelanet and can be joined around 500m away.

The Lac de Montbel is just a ten-minute drive away, a great place for watersports including kayaks, canoes and pedalos, or you can go fishing, bird-watching or simply go for a swim from one of the lakeside beaches. It takes around four hours to walk around the whole lake, passing through forests and admiring the beautiful landscapes around you. You may even be able to see the snow-capped Pyrenees at certain times of year.

This region also offers a wealth of fascinating history such as the Cathar ruins in Montsegur, Lapradelle-Puilaurens and the incredible Château de Queribus. You can also visit Neolithic caves in Niaux and Lombrives, both around an hour away.

If you are travelling during the winter then you will find skiing around Les Monts d'Olmes, one hour by car, or at



other times of year it's a great place for walking and also popular with cyclists.

Not forgetting so many wonderful old villages and towns across the Aude and Ariège regions, many with weekly markets where you can pick up some amazing local produce. Mirepoix has a particularly great Monday morning market, probably the best in the area, and Limoux has a market all day on a Friday. The owners will give you a list of the local markets when you arrive.

Of course, a visit to the magnificent city of Carcassonne, a UNESCO World Heritage site, is a must. See the fascinating castle and the beautiful historic town with its idyllic cafes, shops and restaurants or take some time exploring the Canal du Midi by taking a trip on a boat for a lovely day out.

Local Amenities

Nearest Airport	Carcassonne (50km)
Nearest Airport 2	Toulouse-Blagnac (115km)
Nearest Train Station	Gare de Limoux (26km)
Nearest Village	In the village (0km)
Nearest Restaurant	(200m)
Nearest Supermarket	Small supermarket (200m)
Nearest Tennis	In the village (1.5km)
Nearest Town/City	Limoux/Carcassonne (25km/50km)
Nearest Golf	Golf de Carcassonne (50km)

What we love

- To be able to enjoy such beautiful gardens and a swimming pool in a village château is a rare delight
- The *orangerie* is a particularly beautiful place to dine at any time of day
- The *pétanque* court is of an international standard and has lovely village views
- Wander out to the *boulangerie*, shops, restaurants and cafes and look out for annual festivities in the village
- The famous walking path, Le Chemin Vert, is only 500m away
- The magnificent city of Carcassonne is under an hour by car

What you should know...

- The 12-person price includes 5 bedrooms and the 6th bedroom will be closed to guests. The 16-person price includes all 6 bedrooms. Please see the 'Property Layout' tab for further details.
- There is public car parking in the village one minute away, but not at the château itself
- You enter the château on the lower level, from the street, and stairs take you up to the main floor
- The beautiful gardens are terraced in parts and also feature slopes
- Guests have access to all the rooms listed in the 'Property Layout' tab; other parts of the spacious château are closed off

Terms & Conditions

- **Security deposit:** €2000 charged to clients' credit card by the owner upon arrival and refunded four days after departure, subject to full inspection.
- **Arrival time:** 4.00 p.m.
- **Departure time:** 11.00 a.m.
- **Energy costs included?:** Extra €300 between October and May, payable locally.
- **Linen & towels included?:** Yes.
- **Pets welcome?:** No.
- **Other Ts and Cs:** Weddings, stag/hen parties and any special events are on request only and subject to prior arrangement with the owner and additional charges. A highchair and cot are available on request, subject to an additional cost. The 12-person price includes 5 bedrooms (the 6th bedroom will be closed to guests). The 16-person price includes all 6 bedrooms. Please see the 'Property Layout' tab for further details.
- **Changeover day:** Saturday. All other changeover days on request.
- **End of stay cleaning available?:** Yes. However, guests are required to leave the accommodation clean, tidy and in the same condition as on their arrival. Any extra cleaning, laundry, maintenance and/or rubbish disposal required will be charged against the security deposit.
- **Smoking Allowed?:** Outside only.
- **Insurance:** Guests are required to be in possession of a valid insurance policy, which covers them for cancellations, loss of personal belongings, personal liability and any accidental damage caused during their stay.
- **Minimum stay:** 7 nights in July and August. 3 nights during all other periods.
- **Heating costs included?:** No, heating is payable in the winter, guests will be invoiced separately by the owner.
- **Pool towels included?:** Yes.
- **Pool opening dates?:** The pool is open approximately June to end-September. Please note that pool opening dates are subject to local weather conditions and pool maintenance requirements and that cooler months may not be suitable for swimming.