

Quinta Jordia

Region: Carvoeiro **Sleeps:** 26

Overview

Quinta Jordia is a magnificent mansion on top of the cliff at Praia da Marinha beach, with stunning and unbeatable views of the ocean and beach. As soon as you enter the villa, you're greeted with the authentic décor of this old Quinta. This style flows throughout the villa and is mixed with some modern additions create a luxurious and comforting holiday villa.

This holiday home is designed to host many guests, and this shows in the living room. With large sofas and additional chairs, this is the perfect space for gathering to enjoy a drink or an evening chat. With the wood-burning stove in the corner of this room and plenty of cosy seating opportunities, the homely atmosphere fills this main room.

When you continue down the hall, you reach the dining room. For days when the weather doesn't suit outdoor dining, there are two dining tables. Alternatively, you can exit out of the sliding doors of the living room to reach the terrace where there are several seating arrangements and outdoor dining tables.

The kitchen has a classical elegance in its décor, but it is extremely functional with all the necessary appliances. There is a second storage room along the hallway where you'll find an extra fridge freezer and separate freezer. The villa also has a BBQ so you can enjoy the ultimate summer food while you stay here.

The bedrooms are split across four floors, with a spiral staircase joining them. Each room appears bright and airy thanks to the ample natural light that bounces off the light walls, filling each room. They're all comfortable places to rest your head at the end of the day. Since there are so many rooms, and a good selection of them are rooms with single beds, this villa is perfect for large groups of friends



on a vacation or a retreat together, in addition to large families. Of the 12, a selection of them have en-suite bathrooms, and the rest have separate bathrooms.

There are several locations outside to relax and chill with your guests when you exit out onto the terraces, you'll find tables, a hammock and a further cushioned seating area towards the pool. You do have to head down stone steps in order to reach the pool, but it is worth the views and relaxation potential. The private swimming pool has a range in depth from 1m, perfect for kids and 3 meters which is excellent for the confident swimmers. With roman steps leading into the pool, and ladders in the deeper end, entering and exiting the pool is easy. This area is also surrounded by sunbeds and umbrellas, making it an excellent location for relaxing. Here is also the large garden and the gate that leads to the private path to the beach.

Facilities

Maid Service Included • Wi-Fi/Internet • Golf Nearby • Beach Nearby • Walk to Beach • Beachfront • Villa • Private Pool • <1hr to Airport • Satellite TV • TV • Seaview • Outstanding Landscapes • Outdoor Pursuit & Activities • Tourist Towns & Villages

Interior & Grounds

The Villa

Quinta Jordia is an old farmhouse located on top of the cliff at Praia da Marinha with spectacular seaviews. There are 12 bedrooms and 11 bathrooms, accommodating up to 26 guests.

Pool Level

- Bedroom with two single beds and en-suite bathroom
- Bedroom with single bed
- Bedroom with two single beds and en-suite bathroom (access via single bedroom)

Lower Floor

- Bedroom with two single beds and en-suite bathroom
- Bedroom with two single beds
- Bathroom

Ground Floor

- Fully equipped kitchen with dishwasher, oven, microwave
- Living room
- Dining room

First Floor

- Bedroom with double bed and en-suite bathroom
- Bedroom with two single beds
- Bathroom

Second Floor

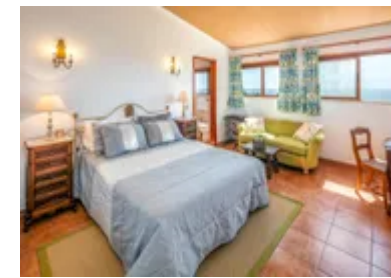
- Bedroom with double bed and en-suite bathroom
- Bedroom with two single beds and en-suite bathroom

Exterior Grounds

- Private swimming pool (15m x 7m; depth 1m - 3m)
- Outdoor shower
- Terrace
- Lawned garden
- Alfresco dining facilities
- Outdoor seating
- Sun loungers
- Barbecue

Additional Facilities

- Wi-fi
- Television
- Washing machine



Location & Local Information

Quinta Jordia has the unique benefit of having a direct path to the closest beach, Praia da Marinha, so you won't have to look hard for a beach to spend time at. But Carvoeiro has some spectacular beaches along the coastline that are also available to you with a bit of travelling. Some of these locations have caves that can be searched and sea life that can be seen for those who enjoy snorkelling.

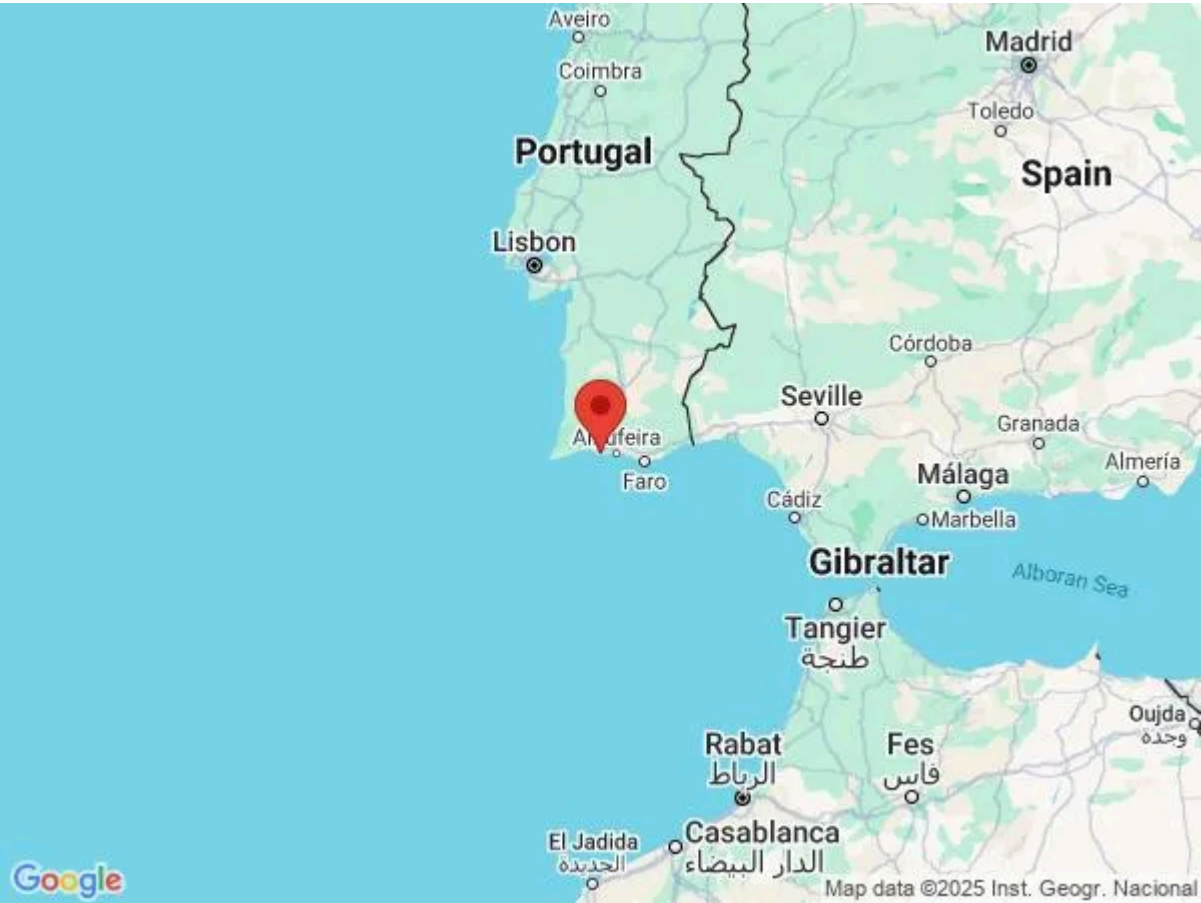
Exploring nearby towns and villages will also bring you opportunities to shop, taste local food and experience the atmosphere of these nearby locations. With restaurants nearby, you can choose to eat out instead of preparing food at the villa. However, there are various supermarket locations as well, so that you can get all the groceries you'd need in order to have a large holiday, enabling you to enjoy food prepared at the villa.

We recommend hiring a car during your stay in Portugal as it allows you to explore at your convenience. You can arrange day trips to Ferragudo or the historic town of Silves. Silves is a popular one due to its beautiful castle and cathedral. There are other towns nearby that boast lovely locations for walks, and cuisine. If you want scenic hiking routes, then you can explore the Sete Vales Suspensos which is one of the most beautiful hiking routes in the Algarve.

If you're travelling as a family, there are various activities available to you within 10km of the villa. Such as the Slide and Splash water park, which is popular with families due to the range of water slides! If you're a family that enjoys golf, then you can play a 9-hole course that was designed by Dave Thomas at Vale da Milho Golf.

Local Amenities

Nearest Airport	Faro Airport (59 km)
Nearest Village	Caramujeira (2 km)
Nearest Town/City	Portimao (17 km)
Nearest Restaurant	O Pescador Benagil (2 km)
Nearest Beach	Praia da Marinha (300 m)
Nearest Golf	Vale da Pinta Golf Course (9 km)
Nearest Tennis	Caroeiro Clube de Teni (9 km)



Nearest Supermarket

Supermercado Mercearia Rocha Brava
(5 km)

What we love

- Quinta Jordia has been decorated in an authentic style that befits this old Quinta; it's beautiful and unique
- The swimming pool is south facing meaning it benefits from the sun for most of the day. So, pick your favourite sun lounger and enjoy the sun!
- You have direct access to Praia da Marinha beach via the private path. This is ideal as it means you have easy access to the closest beach

What you should know...

- There is a staff member who cleans the villa, who is available to prepare Portuguese dishes on request, though it costs extra for this
- The property has an electric entrance gate, controlled by a remote so that you can park cars safely on the property
- The swimming pool ranges from 1m to 3m deep, which means a portion of the pool is excellent for learner swimmers or those less confident, but supervision will be required to ensure they stay in the shallow end

Terms & Conditions

- **Security deposit:** A €50 damage waiver is included in the rental price to help you enjoy a peaceful stay. The waiver provides a limited damage cover in case of any damage to the property or its contents (except in the case of deliberate or reckless acts) up to the value of €1,500. Above €1,500, claims will be made to recoup the extra charges incurred to repair any damage. Please enquire if you wish to know more information.
- **Arrival time:** 4 pm
- **Departure time:** 10 am
- **Energy costs included?:** Yes, included in the rental price
- **Pets welcome?:** Pets are not permitted
- **Changeover day:** Saturday between June and August
 Any day the remainder of the year
- **End of stay cleaning available?:** Yes. However, guests are required to leave the accommodation clean, tidy and in the same condition as on their arrival. Any extra cleaning, laundry, maintenance and/or rubbish disposal required will be charged against the security deposit.
- **Smoking Allowed?:** Smoking and vaping are not permitted
- **Minimum stay:** 7 nights between June and August
 4 nights the remainder of the year
- **Heating costs included?:** Not included in the rental price, extra €150 to be paid with the balance.
- **Pool heating charge?:** Not available at this property.
- **Tax:** The property manager has advised that the cost of tourist tax for this villa will be around €2 per person per night for the first 7 nights and will be collected by the property manager prior to arrival.
- **Internet access?:** Wi-Fi access is included in the rental price